

Port Commission Meetings

Second Wednesday of the
Month at noon
Port Administrative Offices
1626 6th Ave N, Lewiston



The mission of the Port of Lewiston is to develop and manage assets and services that stimulate job creation and trade while entrusted with protecting the quality of life for its citizens.

PORT COMMISSION MESSAGE

Breaching of the Lower Snake River dams as a salmon recovery option has been debated for over 30 years. Regrettably, the issue has become so polarized that discussion between competing interests only occurs in a courtroom.

As Idahoans, we appreciate our incredible outdoor recreational opportunities. We are all environmentalists and support the recovery of salmon and steelhead runs. The Port of Lewiston Commission supports fish recovery efforts and the multiuse benefits of the Columbia/Snake River system. Yes, dams and fish can coexist.

Currently, The U.S. Army Corps of Engineers, Bureau of Reclamation,

and Bonneville Power Administration, are preparing an environmental impact statement (EIS) in accordance with the National Environmental Policy Act on the operations and configurations for 14 federal dams in the Columbia River System. In this Columbia River System Operations EIS, the three co-lead agencies will present a range of reasonable alternatives for long-term system operations and evaluate the potential environmental and socioeconomic impacts on flood risk management, irrigation, power generation, navigation, fish and wildlife conservation, cultural



MARY HASENOEHL
President



JERRY KLEMM
Vice President



MIKE THOMASON
Secretary/ Treasurer

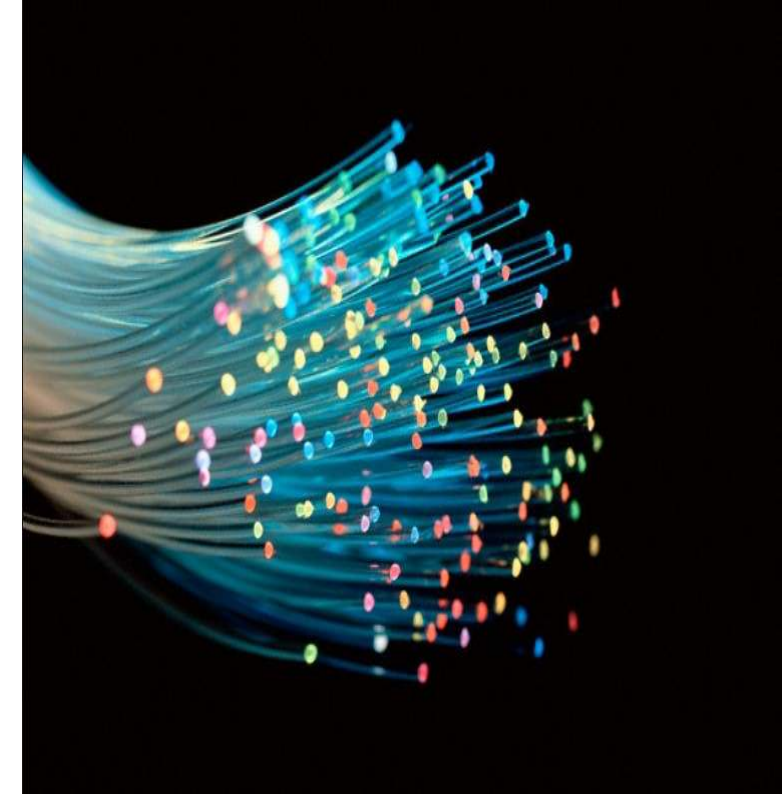
resources, water quality and recreation. Dam breaching would have an extreme economic impacts on the Lewiston/Clarkston Valley. The draft EIS is due out in 2020. We encourage Valley residents to stay informed and engaged throughout the EIS process. More information can be found at: www.crso.info.

Lewiston Fiber Optic Network Benefits Economic Development

The Port of Lewiston continues to invest in the build out of a dark fiber optic network. Since 2015, the Port has constructed over 17 miles of fiber optic infrastructure within the Lewiston area including redundant paths across both the Clearwater and Snake Rivers. The network model creates an even playing field for any service provider interested in offering communication service packages to meet the individual needs of our business community. Currently the network is supporting providers who serve local educational facilities, hospitals, libraries, restaurants, small businesses and medical services.

According to the Forbes Technology Council, "Even though it's not likely fiber will replace all of our connections any time soon...fiber is awesome. It's the fastest, cleanest type of last-mile connection, easily surpassing copper and cable. It's also very secure, since it doesn't have an electromagnetic field. Providers often offer the best service-

Read more, page 2



Tenant News: LCSC'S Skid School



In the state of Idaho, loss of vehicle control, resulting in lane departure, is one of the primary crash causes, resulting in serious injury and death (Idaho Transportation Department).

LCSC's Driver Development Center (DDC), one of the programs offered at LCSC Workforce Training, was developed in 2008 and has been training people since 2009. The Port worked with LCSC during all phases of development. The Skid School is the Vehicle Stability and Control (VSC) training program. It teaches people how to maintain vehicle stability in any weather condition which reduces traction conditions in our roadways. Law enforcement trains here at the DDC for emergency vehicle operation, as do the local fire departments. Transit agencies train at the DDC using both the VSC course and low speed skills course driving. Those are just a few examples. Of course, the general public trains in the VSC classes also. The Idaho STAR Motorcycle training program also trains at the DDC, for this region's riders and for people in Coeur d'Alene region. Government agencies have trained at the DDC from as far away as Montana, Spokane and McCall.

Fiber project continued...

level agreements with fiber, include the fastest mean time to repair, which makes it ideal for handling mission-critical data. For a growing business, fiber is an excellent choice because you can flexibly scale your bandwidth."

When discussing the importance of enhanced availability to local broadband services and bandwidth from a business recruitment perspective, Karl Dye, Executive Director for Valley Vision stated "In the twenty-first century, the need for a broadband communications network is as important as access to a highway and road network. Access to the Port's dark fiber optic network allows our community to be more competitive when we are competing for interested companies looking to locate in our region."

As the Port continues to expand locally, the Port Commission will be considering future investment into the

network and tackle how to reach communities beyond Lewiston. Service to rural communities is a mutually common challenge where construction runs are long and expensive but the needs are the same for the citizens who live and work in these smaller populated areas. The demand for high speed connectivity, bandwidth and security is expected regardless of location. "It is a bit like the wild west all over again" stated Jaynie Bentz, Assistant Port Manager. "We need to help these communities thrive. Their communication needs in the classrooms, medical facilities, emergency management systems as well as their ability to successfully conduct business in a rural, agricultural-based community are no different than the business needs found in an urban community. The Port of Lewiston is working to provide effective solutions to help communities be successful."

2018 Riverfest and The Nez Perce County Fair



The Port of Lewiston joined the festivities at Riverfest in Clarkston this September for a day of music, food and family fun!

At the Nez Perce County Fair we educated kids with the Penny Cargo Challenge and our Dam Turbine Simulator, proving it takes a lot of energy to power their video games!



In honor of Veteran's Day, November 11th, Swift Transportation announces a Military Apprenticeship Program. It allows Veterans to earn additional pay through the monthly VA educational program benefit from their GI Bill on top of their Swift paycheck. For more information visit:

<https://careers.swifttrans.com/driver-jobs/veteran-hiring/>

And

<https://www.businesswire.com/news/home/20180711005831/en/Swift-Transportation-Announces-U.S.-Military-Apprenticeship-Program>

Additional businesses and properties associated with the Port:

Southport Business Park:

Vista Outdoors

Bentz Boats

Juvenile Detention Center

Howell Munitions & Technology

Northport & Harry Wall Industrial Area:

Excel Transport

Swift Transportation

Pacific Steel & Recycling

Clearwater Converting

Federal Express

Lewis Clark Terminal

Atlas Sand and Rock

Diesel & Machine

Carlton Construction

Inland 465

LC Ice Arena

Herco Asphalt & Paving

Graceland Portable Bldgs

Hells Canyon Armory

Clearwater Seed Co.

Broemeling Steel & Machine

United Parcel Service

K&G Construction

Envirotech Services, Inc

Kenaston Corporation

LCSC Skid School

Sysco Food Services

World Wide Abrasives

Meadowgold Dairy

PCS Company

Sprague Pest Solutions

Pure Precision

Bulldog Onsite Services

Clearwater Economic Development Association (CEDA)

Lewiston Solid Waste Transfer Station

Nez Perce County Detention Center

It's our 60th Birthday!

You are cordially invited to the

Port of Lewiston's Annual Holiday Open House.

Please join us for food and drinks on Thursday, December 13th from 3 - 7pm.



THE PORT IS SPRUCING THINGS UP!

The Port of Lewiston has contracted with a local landscaper to plant trees along Col. Wright Way in our Harry Wall Industrial Park.

Utilities, such as electrical, irrigation and fiber optic lines will also be extended along the roadway.

Additionally, planning for new signage at the entrances at two of the Port's industrial business parks is currently underway.



Need space for your manufacturing business?

Suite A - 1,500 sq. ft. and Suite E - 3,000 sq. ft. are currently available in the Incubator. Please contact us at:

portinfo@portoflewiston.com
208-743-5531